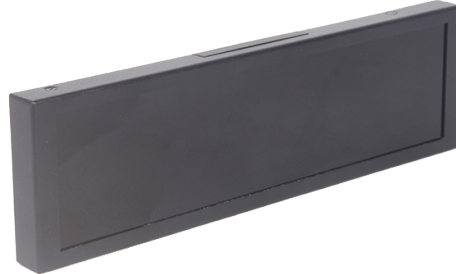


**SVSH8W**  
**8.8" ULTRA STRETCHED ANDROID LCD DISPLAY**



**FULL HD DEFINITION**

Full HD resolution 1920x 480 ensures vivid, high-impact images and videos at the point of sale.



**HIGHLY DURABLE SCREENS**

Reliable commercial grade screens enable your shelf displays to run smoothly 24/7.



**NARROW BEZEL**

A sleek, narrow bezel is especially important when placing multiple screens together. The compact design also adds to the aesthetic and reduces strain on shelf edges.



**NATIVE STRETCHED LCD**

Non-resizing/cutting LCD Panel, so no Broken glass, fragile sealing, micro-cracks, light leakage.



**IPS LCD PANEL**

Commercial grade IPS panels guarantee incredible image quality and colour depth at an ultra-wide viewing angle.



**OPT.: ANDROID PLAYER**

Users can choose to integrated with Android player to update content via USB or CMS. You can also install any 3rd party CMS Software if required.

# SPECIFICATIONS

## Panel

|   |                                  |                                     |                                       |
|---|----------------------------------|-------------------------------------|---------------------------------------|
| <b>Diagonal Size</b><br>8.8"            | <b>Resolution</b><br>1920 x 480  | <b>Brightness (Typ.)</b><br>600 nit | <b>Contrast Ratio</b><br>800:1        |
| <b>Viewing Angle</b><br>170 / 170 (H/V) | <b>Colors</b><br>16.7M, 72% NTSC | <b>LED Life</b><br>30K hours        | <b>AA Area (mm)</b><br>218.88 x 54.72 |

## Power

|                         |  |                                 |
|-------------------------|--|---------------------------------|
| <b>Type</b><br>External | <b>Power Supply</b><br>AC 100 - 240V, 50/60Hz - DC 12V | <b>Power Consumption</b><br>10W |
|-------------------------|--|---------------------------------|

## Mechanical

|   |                         |                      |
|---|-------------------------|----------------------|
| <b>Outline Size (mm)</b><br>240.6 x 69.6 x 16 | <b>Weight</b><br>0.5 kg | <b>Bracket</b><br>x1 |
|---|-------------------------|----------------------|

## Operation

|                                     |                              |
|-------------------------------------|------------------------------|
| <b>Operation Temp.</b><br>0 - 40 °C | <b>Humidity</b><br>10% - 80% |
|-------------------------------------|------------------------------|

## Built-in Android PC

|                                    |                              |                           |                               |
|------------------------------------|------------------------------|---------------------------|-------------------------------|
| <b>CPU</b><br>Quad-core Cortex A35 | <b>GPU</b><br>Mali-G31 MP2   | <b>RAM</b><br>1GB         | <b>Internal Memory</b><br>8GB |
| <b>USB</b><br>USB 2.0 x 2          | <b>Network</b><br>LAN, Wi-Fi | <b>Bluetooth</b><br>BT4.0 | <b>OS</b><br>Android OS 8.1   |